

23 October 2016

© Vince Massimo and Peter Eeles

Citation: Massimo, V. and Eeles, P. (2016). *Notes and Views, Issue 7 - May to August 2016* [Online]. Available from <http://www.dispar.org/reference.php?id=118> [Accessed October 23, 2016].

Notes and Views, Issue 7 - May to August 2016

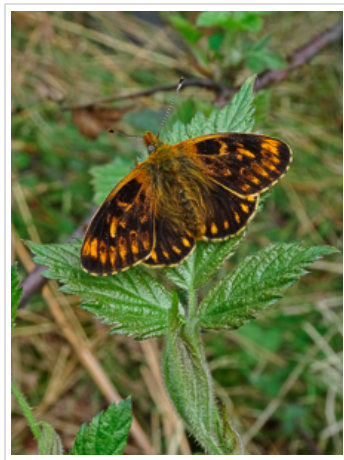
Vince Massimo and Peter Eeles

Abstract: This edition of Notes and Views provides a summary of interesting items posted on UK Butterflies and other media between 1st May and 31st August 2016.

Pearl-bordered Fritillary (*Boloria euphrosyne*) Aberration

12 May 2016 ([Source](#))

A spectacular Pearl-bordered Fritillary aberration was photographed by Dave Miller at Bentley Wood on 12th May. The butterfly in question was also reported and photographed by others.



Pearl-bordered Fritillary (*Boloria euphrosyne*) aberration

Photo © Dave Miller



Pearl-bordered Fritillary (*Boloria euphrosyne*) aberration

Photo © Dave Miller

Marsh Fritillary (*Euphydryas aurinia*) Aberration

23 May 2016 ([Source](#))

A Marsh Fritillary aberration was photographed by Trevor Rapley at a Wiltshire site on 23rd May.



Marsh Fritillary (*Euphydryas aurinia*) aberration

Photo © Trevor Rapley

Holly Blue (*Celastrina argiolus*) Ovipositing on a Vetch

26 May 2016 ([Source](#))

Dave Miller photographed a Holly Blue seemingly ovipositing on a vetch, an unusual choice for this species.



Holly Blue (*Celastrina argiolus*) ovipositing on a vetch
Photo © Dave Miller

Duke of Burgundy (*Hamearis lucina*) Aberration

29 May 2016 ([Source](#))

Two similar aberrations of Duke of Burgundy were photographed in different parts of the country within a few days of each other. The first was taken by Mark Colvin in West Sussex in late May and the second by Dave O'Brien in North Yorkshire on 29th May.



**Duke of Burgundy (*Hamearis lucina*)
aberration**
Photo © Mark Colvin



**Duke of Burgundy (*Hamearis lucina*)
aberration**
Photo © Dave O'Brien

Orange-tip (*Anthocharis cardamines*) Bilateral Gynandromorph

31 May 2016 ([Source](#))

An Orange-tip bilateral gynandromorph was photographed in Leith, Edinburgh on 31st May and was reported on the BC Scotland Twitter feed.



Orange-tip (*Anthocharis cardamines*) bilateral gynandromorph

Silver-studded Blue (*Plebejus argus*) Bilateral Gynandromorph

02 June 2016 ([Source](#))

A Silver-studded Blue bilateral gynandromorph was photographed by Paul Fenn at Penhale Sands, Cornwall on 2nd June.

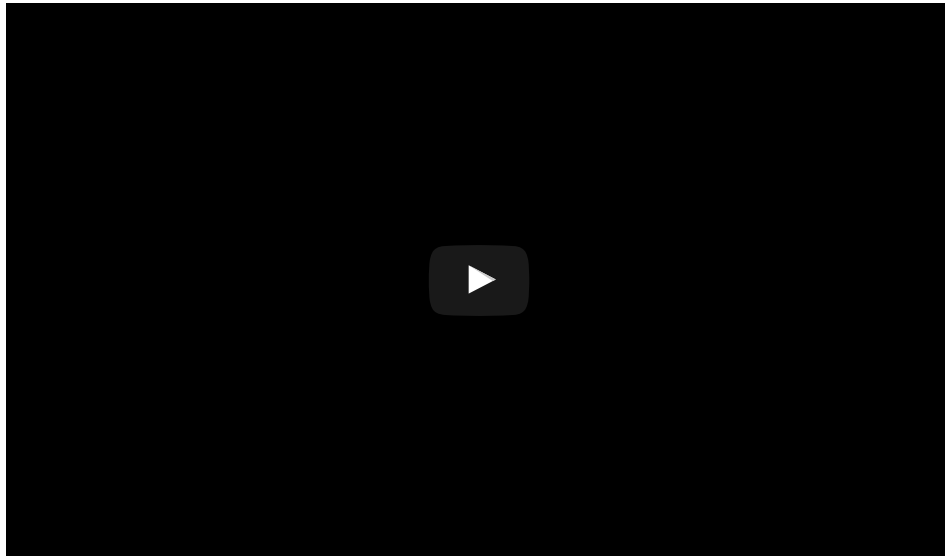


Silver-studded Blue (*Plebejus argus*) bilateral gynandromorph
Photo © Paul Fenn

Small White (*Pieris rapae*) Larva Emerging from Egg

05 June 2016 ([Source](#))

A superb video sequence of a Small White larva emerging from its egg was posted by Gary Norman on 5th June.

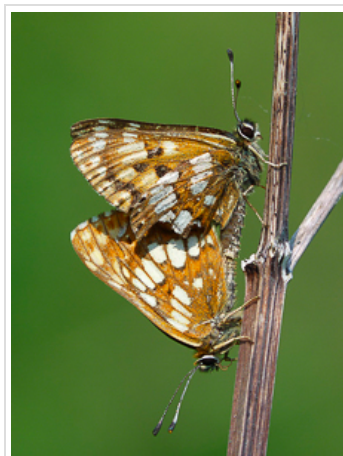


Small White (*Pieris rapae*) larva emerging from egg
Video © Gary Norman

Duke of Burgundy (*Hamearis lucina*) Second Mating

05 June 2016 ([Source](#))

An unusual observation of a female Duke of Burgundy being mated for the second time on 5th June. Reported by Neil Hulme at a site near Storrington, Sussex.



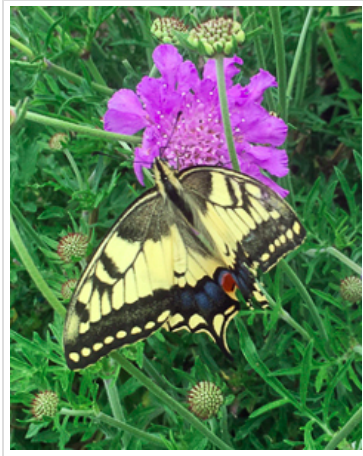
Duke of Burgundy (*Hamearis lucina*) second mating

Photo © Neil Hulme

Continental Swallowtail (*Papilio machaon ssp. gorganus*) Sightings

10 June 2016 ([Source](#))

A continental Swallowtail was photographed at Newdigate, Surrey on 10th June by Stephen Whitmore, as reported on the [Surrey BC website](#). Another was seen near Ashdown Forest on 15th June by Matt Kirk, as reported on the [Sussex BC website](#).



Continental Swallowtail (*Papilio machaon ssp. gorganus*)

Photo © Stephen Whitmore



Continental Swallowtail (*Papilio machaon ssp. gorganus*)

Photo © Matt Kirk

Unusual Interaction between Silver-studded Blue (*Plebejus argus*) and Black Ants

19 June 2016 ([Source](#))

Some unusual and mysterious behaviour, with ants appearing to attack a newly emerged Silver-studded Blue, rather than tending it. Reported by Richard Carter who witnessed the scene at Slop Bog on 19th June.



Unusual interaction between Silver-studded Blue (*Plebejus argus*) and black ants

Photo © Richard Carter

Silver-studded Blue (*Plebejus argus*) Bilateral Gynandromorph

08 July 2016 ([Source](#))

Another Silver-studded Blue bilateral gynandromorph was photographed by Paul Fenn at Penhale Sands, Cornwall on 8th July.



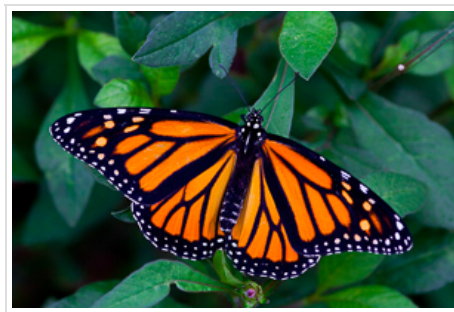
Silver-studded Blue (*Plebejus argus*) bilateral gynandromorph

Photo © Paul Fenn

Monarch (*Danaus plexippus*) Sightings Attributed to Releases

17 July 2016 ([Source](#))

A Monarch was seen in a Rottingdean garden (near Brighton), East Sussex by Amanda Connolly and two others on 17th July, as reported on the [Sussex BC website](#). No photograph was possible and the individual was subsequently attributed to a wedding release. Another Monarch was seen in London on 17th July by Barbara Hall as well as one (also in London) on 18th July reported by UKB member "nathNW6". Both are most likely to be escapees from a local butterfly exhibit.



Monarch (*Danaus plexippus*)

Photo © Peter Eeles (library image)

Determining the Sex of an Adult White-letter Hairstreak (*Satyrium w-album*)

19 July 2016 ([Source](#))

Observations by Guy Padfield on differentiating the two sexes of White-letter Hairstreak, based on the oval relief of the sex brand that is visible on the underside of the forewing.



White-letter Hairstreak (*Satyrion w-album*)

Photo © Guy Padfield

Purple Emperor (*Apatura iris*) Egg Maturation Observations

24 July 2016 ([Source](#))

Superb observations by Guy Padfield on the maturing of Purple Emperor eggs, and the relevance of the band that forms in terms of larval head capsule development.



Purple Emperor (*Apatura iris*) egg maturation

Photo © Guy Padfield

Long-tailed Blue (*Lampides boeticus*) Sighting in London

25 July 2016 ([Source](#))

A fresh Long-tailed Blue was seen inside a house in Camden, London by Alice Smith on 25th July. The circumstances of this sighting point to an accidental introduction, possibly an immature stage being transported with foodstuff.



Long-tailed Blue (*Lampides boeticus*)

Photo © Neil Hulme (library image)

Another Long-tailed Blue (*Lampides boeticus*) Sighting in London

10 August 2016 ([Source](#))

A Long-tailed Blue was reported in Tower Hamlets Cemetery Park by Terry Lyle on 10th August. Although this is an interesting sighting, it is an isolated one, with no other reports yet coming in from coastal areas (which would normally appear first since this species immigrates from the continent).

Common Blue (*Polyommatus icarus*) Bilateral Gynandromorph

16 August 2016 ([Source](#))

A spectacular Common Blue bilateral gynandromorph was photographed by Barry Mills at Winsford, Cheshire on 16th August.



Common Blue (*Polyommatus icarus*) bilateral gynandromorph

Photo © Barry Mills

Camberwell Beauty (*Nymphalis antiopa*) Sighting

22 August 2016 ([Source](#))

A Camberwell Beauty was reported at Broad Oak (Near Heathfield) East Sussex on 22nd August by John Phillips. The identification was only made of the butterfly in flight and it was heading in a westerly direction.



Camberwell Beauty (*Nymphalis antiopa*)

Photo © Peter Eeles (library image)

Wall (*Lasiommata megera*) Aberration

24 August 2016 ([Source](#))

An unusual aberrant Wall was photographed at Spurn Head, Yorkshire.



Wall (*Lasiommata megera*) aberration

Continental Swallowtail (*Papilio machaon* ssp. *gorganus*) Sighting

29 August 2016 ([Source](#))

A continental Swallowtail was seen by several people at Hankley Common (near Elstead), Surrey on 29th August, and was reported by Philip Underwood.